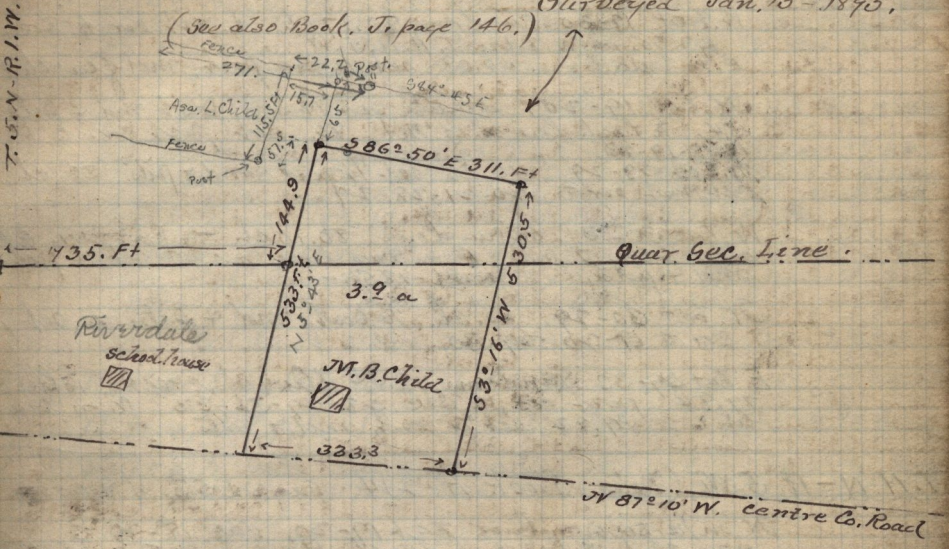


Survey No 3, For M. B. Child of River Dale, Weber Co.

Being Part of S.W. 1/4 & Pt. N.W. 1/4 of Sec. 7, T. 5, N. R. 1, W. Beg. at point 735 Ft. E. and 144.9 Ft. N 5° 43' E. of S.W. cor. N.W. 1/4 of said Sec. Running thence S 86° 50' E 311 Ft. - S 3° 16' W. 530.2 Ft. to centre of Str. N 87° 10' W. 333.3 Ft. along centre of said St. to point, S 5° 43' W. of beg. - N. 5° 43' E. 523 Ft. to beg. 3.9 a. to be conveyed by M. B. Child & wife to Myron B. Child & Geo. C. Child, each an und. 1/2

Surveyed Jan. 15th 1895.

(See also Book, T. page 146.)



Survey No A, For E. J. Horrocks, Jan. 16-1895, Lee Curtis

Description Issued by self, corners not set:
Part of Lot 7, in B 27, P.A. OCS. Beg. 205.75 Ft. E. of N. W. cor. said Lot. W 39 Ft. 6 1/2 Ft. to S. line of Lot 7. E. 39 Ft. N 132 Ft. more or less. to beg. (See Sketch)

